

Whilst every effort is made to give a fair description, the accuracy of these particulars is not guaranteed, neither do they constitute an offer or contract.

MATHESONS ESTATE AGENTS have not tested any apparatus, equipment, fitting or services and so cannot verify that they are in working order. The buyer is advised to obtain verification from their solicitor or surveyor. Measurements are correct to within +/- 6 A sonic tape is used. None of the statements contained in these particulars or any of our properties are to be relied upon as a representation of fact.

166 Manor Park Road
Harlesden
London
NW10 4JT
T: 020 8965 2250
E: sales@mathesonsestates.com
www.mathesonsestates.com



Roundwood Road, London, NW10 9UN

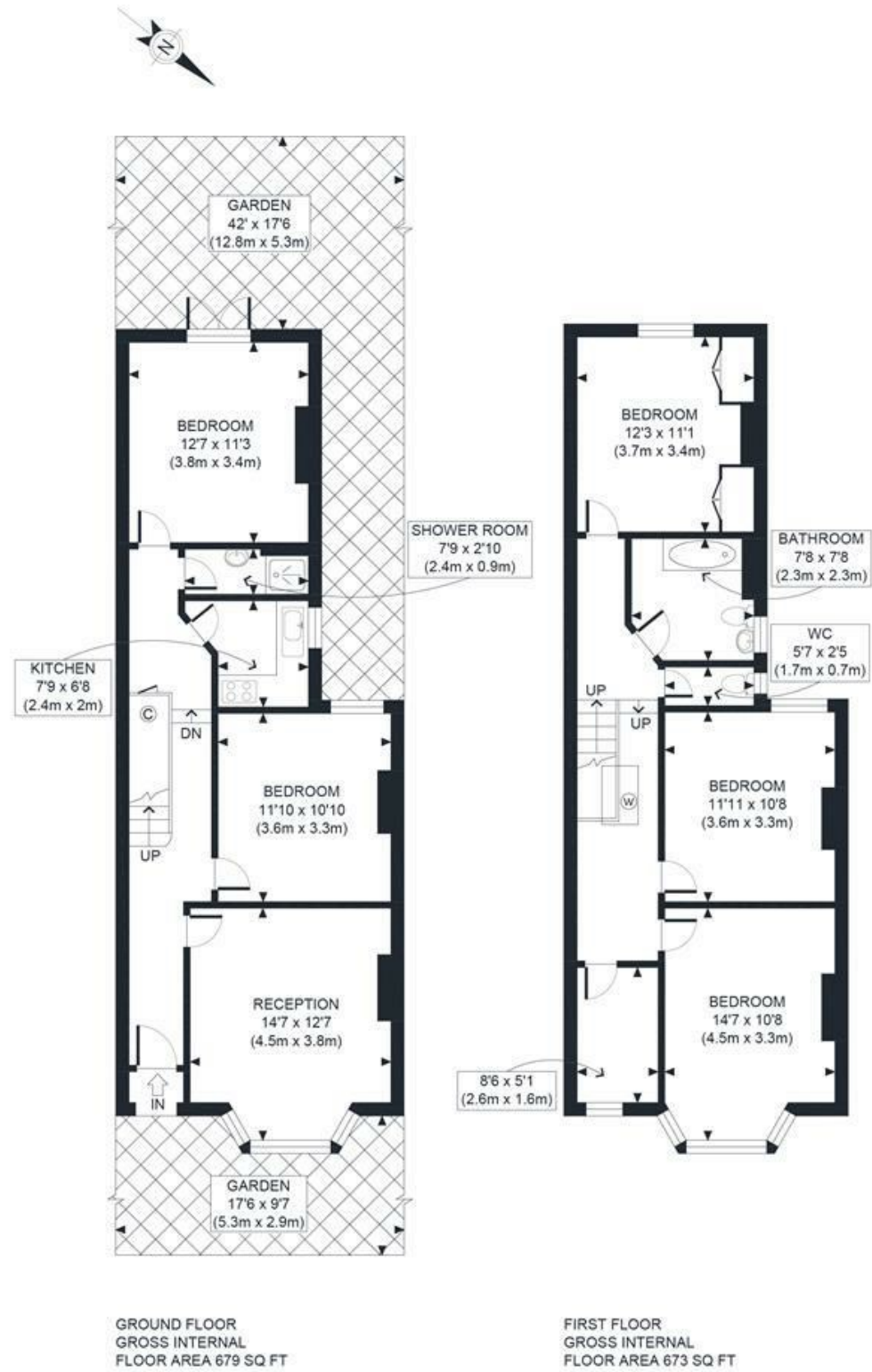
Offers In The Region Of £660,000 Freehold



KEY FEATURES:

- Fine period home
- Double bay
- over 1400 sq ft
- Character
- Good Garden
- Needs Modernisation
- Must be seen
- No Chain
- Keys in Office
- Sought after Road

A charming period family home of generous proportions only a few moments from the beautiful Roundwood park. Ideal for developers or Investors this charming home requires complete modernization and is offered with immediate vacant possession. With Five bedrooms and two receptions this spacious property offers over 1300 sq ft of accommodation with ample potential for further development (stp) Buyers who are in a position to proceed and offer a pre Xmas completion are welcome to attend at any time over the weekend of 12/13th November when offers will be invited. Please call for a private viewing slot.



APPROX. GROSS INTERNAL FLOOR AREA 1352 SQ FT / 126 SQM

Ref: Copyright **photoplan**

Disclaimer: Floor plan measurements are approximate and are for illustrative purposes only. While we do not doubt the floor plan accuracy and completeness, you or your advisors should conduct a careful, independent investigation of the property in respect of monetary valuation

